



## CAPRIVI & KHAUDUM CAMPING SAFARI

Visit remote and beautiful areas often devoid of other visitors on this camping safari through Namibia's north-east and Caprivi Strip. Sleep under soft duvets on stretcher beds in comfortable mobile camps erected for you. Your knowledgeable guide will escort you through the rugged wilderness of Khaudum National Park, a densely wooded wilderness region of the northern Kalahari that's unreachable in a 2WD vehicle. Experience rural village life and travel through lush green landscapes not seen in the western desert regions of Namibia. Seek out wildlife on the fertile flood plains, swamps and in the riverine forests of the small but fascinating Mahango Game Reserve and in the larger, wilder Bwabwata National Park.

### Day 1 - Flight to Namibia

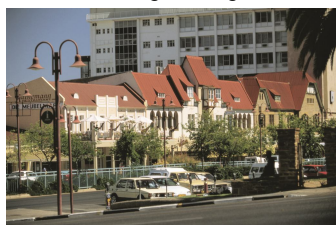
Begin your safari holiday to Namibia with a scheduled overnight flight from London to Windhoek, via Johannesburg.

Includes dinner on the flight.



### Day 2 - Windhoek

After checking through customs at Windhoek Airport, you are met and transferred to a quiet guesthouse set in pretty gardens and situated in one of the city's leafy suburbs. Spend the afternoon relaxing and getting over your long flight or take the time to explore Windhoek. Ask your hosts to recommend their favourite restaurant from one of the city's many good eateries or perhaps arrange to dine in.



Includes breakfast on the flight.

### Day 3 - Grootfontein Area

Your guide will meet you at your guesthouse after breakfast for the drive north through a region of gentle rolling hills where many of Namibia's larger farms and ranches can be found. En route you'll pass through the towns of Okahandja and Otjiwarongo and circumnavigate the small, scenic Otavi mountain range on your way towards Grootfontein: the gateway to Bushmanland and Namibia's north-east. Stop in this region for your first night under canvas in a comfortable mobile camp.

Windhoek to Grootfontein: approx. 5 hours (450km)

Includes breakfast, lunch and dinner.

### Days 4 & 5 - Khaudum National Park

After breakfast head east to Tsumkwe, the heart of Bushmanland. Following a short break here you continue to Khaudum National Park and your camp site at Sikeretti within the park. Khaudum is in a very remote area of Namibia and difficult to reach in a normal vehicle so coming here with a knowledgeable guide on a camping safari allows you to explore this wild and magical region in comfort and safety. Underground waters of dry, sandy rivers help sustain this important area of the northern Kalahari and the wildlife that lives here. You might see herds of elephant and wildebeest, numerous antelope species including good numbers of the shy roan antelope, and even wild dog as Khaudum is the centre for Namibia's population of these rare predators.



Spend a full day game viewing as you travel between Sikeretti and Khaudum camping sites. Although you are likely to have some excellent game encounters along the way, you should come here with a mind to experience a wilderness in a very remote corner of the Kalahari and let

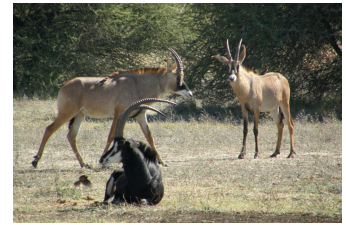
any wildlife sightings be a bonus. Your camp for the second night is idyllically situated atop a sand dune, overlooking the Khaudum River Valley. In the late afternoon you will take a drive out onto the grassy flood plains of the Khaudum River.

Grootfontein to Sikeretti camp: approx. 6 hours (280km)

Includes breakfast, lunch and dinner.

### Day 6 - Mahango Game Reserve

Depart early in the morning and travel to Khaudum's northern border following a sandy and difficult remote road. As you near the Kavango Region of the Caprivi Strip you will begin to see growing signs of rural village life; there may even be the chance to visit one of these traditional Kavango communities. Once you meet the tarmac road it becomes an easy drive towards Bagani and Popa Falls. You aim to arrive at your camp site in time for a late lunch. Overlooking the wide Kavango River and the Bwabwata National Park beyond, this is a pretty location and you can spend the afternoon enjoying the view from the river deck or relaxing by the pool. Perhaps consider an optional boat cruise to seek out an impressive array of birdlife, basking hippos, drinking elephants or even a pair of playful otters.



Khaudum to Mahango: approx. 6 hours (270km)  
Includes breakfast, lunch and dinner.

### Day 7 - Mahango Game Reserve

On this day of the camping safari your guide takes you on a full days' game drive into the nearby Mahango Game Reserve where you will find a tremendous diversity of environments despite the reserves relatively small size. The Kavango River forms the parks eastern boundary and is the focus of the reserve. Flanked by permanent papyrus reed beds, the river channels are home to hippos and crocodiles and many water-loving birds, such as ducks, geese, herons, plovers, egrets, kingfishers and numerous waders. More bird species can be found here than in any other park in Namibia.



Adjacent to the river are extensive floodplains where you're quite likely to spot red lechwe or sable, a relatively scarce and beautiful antelope that seems to thrive here. The area's variety of vegetation, from wide belts of date palm forest to lush riverine woodland dotted with giant baobab trees, attracts an impressive range of animals, several of which are not seen in some of Namibia's drier regions. Return to camp in the late afternoon to enjoy a relaxing

sundowner drink on the deck overlooking the river.

Game drives.

Includes breakfast, lunch and dinner.



### Days 8 to 10 - Bwabwata National Park

An easy drive takes you from Mahango Game Reserve towards eastern Caprivi and the Bwabwata National Park. Formerly Namibia's Caprivi Game Park, Bwabwata stretches from the Kavango River in the west to the Kwando River in the east, and your destination. The environment around the Kwando River can be likened to Botswana's northern reserves with riverine woodland, floodplains and lagoons combining to create a beautiful and interesting landscape to explore. Your comfortable mobile camp will be set up in a scenic spot within this little visited park.

Spend your time on morning and afternoon game drives here and in the nearby Mudumu National Park. This mixture of habitats is home to a wide variety of animal life and you can usually see herds of elephant and buffalo along with a multitude of antelope. Look out for puku, reedbuck and the secretive sitatunga antelope, species that you won't have come across in other areas of Namibia. The waterways and lagoons host innumerable birds, from herons and egrets to eagles and owls – it's a birdwatchers paradise.

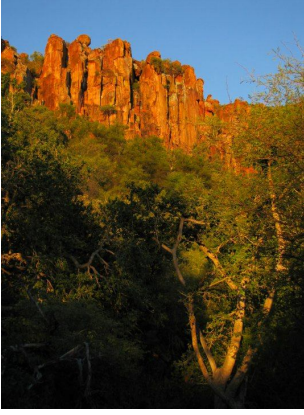


Mahango to Bwabwata: approx. 4 hours (270km)  
Includes breakfast, lunch and dinner.

### Day 11 - Rundu

Leaving the wilderness behind you retrace your steps through the Caprivi Strip and on to the bustling town of Rundu. This ramshackle town has a wonderful, if slightly disorderly, feel of rural Africa. Livestock wander around its rickety buildings, flashes of colourful fabrics appear everywhere, and in places you'll sense a Portuguese influence from neighbouring Angola. Tonight you'll camp on the banks of the Kavango River and enjoy a relaxing afternoon by the pool or an optional sundowner boat cruise.

Bwabwata to Rundu: approx. 5 hours (450km)  
Includes breakfast, lunch and dinner.



### **Day 12 – Waterberg Plateau**

Spend a little time at Rundu's roadside craft markets before travelling south towards Namibia's central highlands on a long but easy drive. Your destination is Waterberg National Park, a flat-topped plateau with stunning surrounding scenery. After settling into camp in the shadow of the Waterberg's cliffs, and if you're feeling energetic, it is worth taking the relatively easy 45-minute hike up the plateau for the spectacular view.

Rundu to Waterberg: approx. 6 hours (550km)  
Includes breakfast, lunch and dinner.

### **Day 13 - Windhoek**

After a leisurely breakfast you return to Windhoek via the town of Okahandja. Artisans from all over the country congregate at the two large craft markets here to sell their wares making it a great place to buy curios and carvings. Arriving in Windhoek during the late afternoon there is time to freshen up before dinner at one of the many great restaurants.

Waterberg to Windhoek: approx 4 hours (400km)  
Includes breakfast and lunch.

### **Day 14 - Flight to London**

Your morning is free to visit the city, enjoy a coffee at a café or stop to buy last-minute souvenirs. You are collected in the afternoon and transferred to the airport in time for your scheduled flight home and the end of your camping safari to Namibia.

Includes breakfast. Dinner is on the flight.

### **Day 15 - Arrive in London**

## **SAFARI INFORMATION**

Explore less visited areas of Namibia with a knowledgeable guide on this camping safari. You will sleep under canvas on all nights except for in Windhoek. During this safari you will take in the remote Khaudum National Park, traverse the lush Caprivi Strip, and seek out wildlife in Bwabwata and camp on the banks of the Kavango River. Camping equipment is supplied on this safari to Namibia, and three meals are provided on most days.

### **Guide**

The Caprivi & Khaudum Camping safari is led by a professional guide. Our guides are very important to us: they are picked carefully and trained well. All speak good English and almost all are Namibians. Whilst on safari with them you will be able to learn a lot about Namibia and what you see there – including much about the flora, fauna and local cultures. They will be able to identify all of the animals, many of the birds, and some of the plants that you see.

### **Camp assistant**

Each safari is also accompanied by a camp assistant who helps the guide and is responsible for all the camp chores.

### **Mobile camps**

Whilst at a camp you will stay in comfortable twin-bedded, dome tents measuring 2.6m x 2.6m x 1.8m. The fold-up camp beds each have a sleeping roll with a comfortable mattress, linen, a duvet, a pillow and a blanket for cooler weather. Towels are also provided. Each tent also includes a bedside table with small reading lamps.

A shower tent and a bush toilet are set up for every four guests. Each shower tent is fitted with a solar bucket shower which carries ample water for a decent shower per person after a long day's safari. The bush toilet consists of a 'proper' toilet seat over a long drop with ash or sand to flush.

## **Vehicles**

Transport on this camping safari to Namibia is in custom-built Land Rovers, Toyota Land Cruisers or Toyota double cabs. Some of the vehicles take two to four passengers whilst others have been stretched to accommodate six passengers. Each traveller is guaranteed a window seat. Some of the safari vehicles are equipped with large sliding windows and photo roof hatches.

The vehicles are fitted with an inverter plug allowing travellers the opportunity to charge batteries whilst driving. Batteries can also be charged at the lodges and at some of the less remote campsites. Namibia uses plugs with three large round pins – the same type used in South Africa. It is relatively easy to find an adaptor converting a UK plug to a South African plug which would also work in Namibia. The plug points available in the safari vehicle are for charging necessary items only such as camera batteries; they are not available for charging electric toothbrushes or mobile phones.

## **Usual group size**

The price of this Namibia safari is based on a minimum of four passengers on any given departure. If you wish to join a departure that has less than four passengers at the time of your booking please speak to us as there is a surcharge. These surcharges would be refunded to you should others subsequently join the safari, thus meeting the minimum requirement of four passengers.

This safari runs with a maximum of twelve passengers. The safari vehicles used on this camping safari carry either four or six passengers, allowing each traveller a window seat. For groups of six to twelve passengers, two vehicles will run in convoy lead by two guides.

## **Language**

The Caprivi & Khaudum Camping Safari is conducted in English.

## **Torches**

Some of Namibia's more remote campsites are not well lit. The camp's equipment includes at least one rechargeable electric lantern; this is turned off once everyone has settled for the night, so it's important that you bring a good torch or good quality headlamp with you. You'll find this useful when walking to and from your tent.

## **Age of Travellers**

The minimum age on a scheduled safari departure is 10 years old and there is no maximum age limit. Children from the age of 10 accompanied by parents are welcome on the Caprivi & Khaudum Camping Safari. For parties with children under the age of 10, a private tailor-made safari can be quoted for on request.

## **Single Travellers**

If you are willing to share a twin tent/room with another traveller of the same gender we may be able to waive the single supplement. However, if a suitable match cannot be found, the single supplement will be charged.

## **Costs**

This comfortable camping safari includes transport in a specially designed safari vehicle; all noted transfers; full camping equipment; campsite fees; entrance fees to all national parks and sites, and usually three meals a day.

## **Meals**

The Caprivi & Khaudum Camping Safari includes almost all meals. The only meals not included are lunch and dinner in Windhoek on Day 2, dinner in Windhoek on Day 13 and lunch on Day 14.

## **Drinks**

Complimentary house wine and beer is served with each evening meal whilst camping and refreshment drinks will be provided from your safari vehicle. Any other beverages will be for your own account with costs payable locally. Your guide will let you know where to stock up on soft drinks, wines, beers and bottled mineral water and each vehicle has a fridge in which you can keep drinks cool.

## **Laundry**

A laundry service is not included on the Caprivi & Khaudum Camping Safari. However, it is often possible for your guide to speak to the staff at your campsite on your behalf and to arrange laundry to be done for you. This is only available when staying two or more nights at the same camp and the cost for this can be agreed and paid for locally. Alternatively, ask your guide for a bucket of water should you want to do some hand washing yourself.

### **Tipping**

Tipping is not compulsory whilst on a camping safari to Namibia. If, however, you want to tip because you have received good service, we recommend a discretionary UK Sterling GBP £5 per day per person for your safari guide and UK Sterling GBP £2 per day per person for the camp assistant. About 10% is normal in restaurants.

### **Visa and Passport requirements**

When travelling to southern Africa, you are required to have a valid passport together with onward travel documents. In addition to this, your passport must be valid for at least 6 months from your travel date and must include a minimum of 2 blank pages for customs and immigration stamps. If you do not adhere to these requirements you may be denied entry to South Africa and Namibia.

It is our current understanding that travellers on a British, American, New Zealand or Australian passport do not need a visa for South Africa or Namibia. However, these are just guidelines and so it remains **your responsibility** to double check the necessary requirements with the nearest relevant embassy or high commission in good time before you travel.