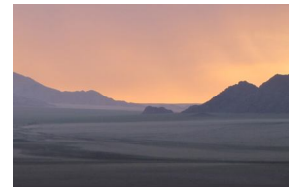




SOUTHERN NAMIBIA DESERT ADVENTURE

Enjoy the spectacular landscapes, fascinating history and varied attractions of southern Namibia during this interactive camping safari. All camping equipment is provided and your guide and camp assistant are on hand to show you how easy it is to set up your walk-in dome tent. There are many memorable highlights including watching sunrise over the world's tallest dunes, visiting a Nama cultural centre where you discover traditions very different to our own, peering into the depths of one of the world's largest canyons and learning about the enthralling

history of the remote seaside town of Luderitz. From occasional sightings of desert-adapted wildlife, including the world's only wild desert horses, to insights of a bygone era at the eerie diamond ghost town of Kolmanskop; this safari adventure offers the best of Namibia's south.



Day 1 - Flight to Namibia

Begin your adventure with a scheduled overnight flight with *South African Airways* from London, via Johannesburg, landing in Windhoek the following day.

Includes dinner on the flight.

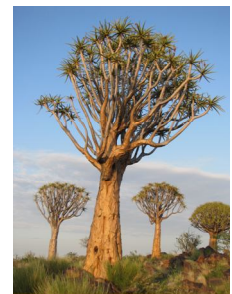
Day 2 - Windhoek

On arrival in Windhoek, you are met at the airport and transferred to a comfortable guesthouse in one of the capital's central suburbs. Take some time to recuperate this afternoon by relaxing by the pool or taking a leisurely wander to explore around the city centre. Dinner is at your own expense and there are plenty of good restaurants to choose from, or alternatively you may prefer to order in at the guesthouse. Just ask the helpful staff at reception who will assist you with options.

Includes breakfast on the flight.

Day 3 - Quiver Tree Forest

Breakfast is served at the guesthouse before you are met between 07.30 and 08.00 and transferred to the Windhoek safari base where you will meet your guide and group. Stock up with cool drinks and drive south, over the Tropic of Capricorn and alongside the western edge of the Kalahari Desert. You aim to arrive and set up camp beside the fascinating Quiver Tree Forest during the mid-afternoon. In fact the striking and bizarre looking quiver trees found here aren't trees at all, but a type of aloe. The common name arose from the Bushmen's traditional use of the hollow branches to store their quivers. These aloes are one of the world's rarest flora species and although single quiver trees can be found dotted throughout southern Namibia, it is extremely unusual to find a forest of them such as this.



Windhoek to Quiver Tree Forest: approx. 6 hours (500km)

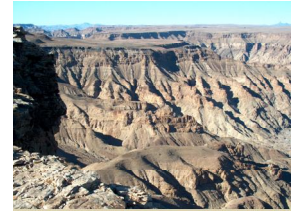
Includes breakfast, lunch and dinner.

Day 4 - Fish River Canyon

After breakfast you'll visit a nearby attraction known as the 'Giant's Playground'. Gigantic eroded dolerite rocks balance precariously on top of each other in fascinating tower formations as if placed by a giant. Then head south, possibly making a short stop in the town of Keetmanshoop for fuel and supplies on the way. You aim to arrive at the impressive Fish River Canyon in time for a picnic lunch at the main viewpoint. Carved out by erosion over millions of years, this is arguably the

world's second largest canyon of its kind, after Arizona's Grand Canyon. You'll be afforded stunning vistas into the depths of the canyon from this vantage point along the rim. Drive further south where you'll camp at Ai Ais Resort near to some warm springs, often with time for a swim in the afternoon.

Quiver Tree Forest to Fish River Canyon: approx. 4 hours (250km)
Includes breakfast, lunch and dinner.



Day 5 - Aus

You begin by driving further south to Namibia's border with South Africa, before turning west and stopping for lunch along the bank of the attractive Orange River. The road cuts a swathe through rocky desert environments, past the remote outpost of Rosh Pinah and continues on to the small town of Aus. Your campsite for the next two nights is near here, at a stunning spot on the edge of the escarpment overlooking vast views of Sperrgebiet National Park.

Fish River Canyon to Aus: approx. 5 hours (330km)
Includes breakfast, lunch and dinner.



Day 6 - Luderitz / Aus

Make an early start to drive westwards alongside the Sperrgebiet, formerly a forbidden diamond mining zone that was proclaimed a National Park in 2008. You keep a sharp look out for the Namib Desert's unique wild horses and cross breathtaking vistas before passing your first coastal sand dunes to reach the historic Germanic town of Luderitz. An excellent optional boat cruise (about GBP 29 / US 45) is available on the traditional schooner *Sedina*, which (weather permitting) sails to Halifax Island to see the Atlantic Ocean's rich bird and marine life, including African penguins and heaviside dolphins.



Immediately after the cruise you'll visit Kolmanskop, once a wealthy diamond boomtown established in the 1920's. Since it was deserted in the 1950's, Kolmanskop has become a ghost town battered by the desert elements and encroaching sands. For lunch you are free to sample Luderitz's cafes and seafood, and look around the interesting colonial architecture before an afternoon drive to explore the peninsula and historic Diaz Point. Driving back inland to your camp near Aus, there is usually a stop to see the wild horses that inhabit the arid Namib Desert along with desert-adapted game such as oryx and ostrich.

Aus to Luderitz to Aus: approx. 3 hours (250km)
Includes breakfast and dinner.

Day 7 - Namib-Naukluft Park

Today you head north along the edge of the southern Namib Desert through some of Namibia's most spectacular scenery, with fabulous vistas at every turn. There is time to stop for lunch at a Nama cultural initiative near the town of Maltahohe. A local guide will introduce you to these friendly people who speak a Khoisan language (with clicks). You will discover a little of their lifestyle and traditions and perhaps watch a short play or dance routine performed by the local school children. Arts and crafts made by the community are available to purchase and, because everyone benefits from your visit, the atmosphere is friendly and welcoming.

You aim to arrive at your campsite on the edge of the desert during the late afternoon, in time to set up camp and then relax and enjoy sundowners whilst watching the sunset colours glow and fade on the Naukluft Mountains.

Aus to Namib Desert Camp: approx. 5.5 hours (400km)
Includes breakfast, lunch and dinner.

Day 8 - Namib-Naukluft Park

Rising well before dawn, you drive to Sesriem to enter the Namib-Naukluft National Park at sunrise and continue deep into the desert to reach Sossusvlei. This area is home to some of the world's highest sand dunes and the scenery is truly incredible. The shifting, contrasting patterns of early morning light and shadow on these dunes are always enthralling. Whilst it is still cool, you stop for breakfast and an invigorating climb to the crest of one of these magnificent apricot coloured dunes. As you explore this area further on foot, your guide will show you the surprising variety of flora and fauna that has adapted to survive this arid environment. You return to Sesriem for lunch, after which a short drive takes you to Sesriem Canyon where the force of the ephemeral Tsauchab River has formed a deep, narrow gorge into the surrounding rock. You then return to your campsite in the afternoon for some well-deserved leisure time.

Desert Camp to Sossusvlei to Desert Camp: approx. 3.5 hours (240km)
Includes breakfast, lunch and dinner.



Day 9 - Windhoek

Driving back to Windhoek, you'll pass through more stunning scenery as the road climbs up and over the escarpment and on to the central highlands. You arrive back at your guesthouse at around 16.00. You are free to relax this evening, although the group often arrange to meet up for a farewell dinner to end this superb camping adventure in Namibia.

Desert Camp to Windhoek: approx. 5.5 hours (315km)
Includes breakfast and lunch.



Day 10 - Flight to London

After some free time to explore Windhoek, you are collected from your guesthouse and driven to the airport in time to depart on your scheduled overnight flight to London, via Johannesburg.

Includes breakfast and dinner is on the plane.

Day 11 - Arrive in London

SAFARI INFORMATION

This Southern Namibia Desert Adventure is the ideal camping safari for adventurous travellers who wish to see the key highlights of Namibia's vast and dramatic south. Packed with incredible landscapes, an intriguing history, unique desert-adapted flora and fauna, geological marvels and diverse experiences; you will come away with many unforgettable moments and an appreciation of the soul enriching wilderness. The camping provides a comfortable balance of excellent facilities in fantastic remote settings. You will set up and sleep in easy to erect dome tents, whilst all other camping chores are taken care of by a camp assistant. Nights under canvas beneath a star-filled Namibian sky are part of the magic.

Guide

You will be led by a qualified guide who acts as your safari co-ordinator, companion, source of local knowledge, driver and chef. Most guides are Namibian born or raised, with an extensive background of general knowledge of the country's wildlife, geography, culture and attractions; combined with personal experiences they are keen to share. The guides are trained in house to cover the breadth of Namibia so they can inform you on a wide variety of subjects, however they are not specialists in any particular fields. They are personable and enjoy getting to know travellers from all over the globe.

Camp assistant

You will also be joined by a camp assistant throughout this southern Namibia camping safari. The camp assistant will carry out most of the camp jobs such as doing the washing up and helping the guide with the cooking and packing. You only need to set up and pack down your tents (this is easy once you are shown how) but you are welcome to get involved with other day to day camp chores should you be keen to partake in the full camping experience.

Camping equipment

You will be provided with all the camping gear you need during this Southern Namibia Desert Adventure. Camping equipment is transported in the safari vehicle or towed behind in a custom-built trailer. Camp chairs with a backrest are supplied for seating. You'll sleep under canvas in two-man, walk-in dome tents that are simple to set up and take down. These tents are secured with a sewn-in ground sheet and netting on the windows and door to keep out any unwelcomed bugs. A 5cm thick mattress and sleeping bag are also supplied, unless you would prefer to bring your own sleeping bag in which case a '3 or 4 season' is advisable. We recommend that you take an inflatable travel cushion or small pillow as pillows are not provided.

Vehicles

Your transport during this Namibia camping safari is likely to be in a *Toyota Dyna* which seats up to fourteen people. For smaller groups of four people or less you may be transported in a minibus or double-cab (4WD pick up) towing a purpose-built trailer.

All the safari vehicles are fitted with seatbelts. The *Toyota Dynas* have been custom-made to suit these camping safaris and are fitted with a pop-up roof, bucket seats and air-cushioned suspension. Most vehicles also have a strip of plug points from which you can charge your batteries and (less importantly when on holiday) mobile phones. Plug points are also available at some of the campsites you will stay at.

Plug points in Namibia are the same type used in South Africa, 15 amp with three large round pins. It is advisable to travel with your own plug adaptor, ensuring that you purchase one which converts to the South Africa style plug.

Campsites

The camping sites on this southern Namibia safari generally offer adequate if not first-rate facilities. Most have separate ablution blocks with cold and hot water, flush loos, a bar or shop to buy drinks, and some even have a swimming pool. The more remote camping sites may not provide lighting and although there will be gas lamps in camp you do need to bring a reliable torch with you for moving around after dark. A head torch is particularly useful to free up your hands.

Language

This Southern Namibia Desert Adventure will be guided in English.

Costs

The following is included in the camping safari price: return scheduled flight between UK and Namibia via Johannesburg; transport in a custom-built safari vehicle with trailer if required; transfers as described; accommodation in Windhoek; camping and campsite fees; use of good-quality camping equipment; national park entry fees; and three meals on most days unless otherwise noted.

Meals

Three meals a day are included on most days, with the general exception of lunch or dinner when you are in towns. Breakfast is usually a continental buffet selection, picnic lunch a choice of bread, fillings and salad, and dinner is cooked over an open fire. Fresh supplies are offered when available and topped up where possible during the safari.

Meals that won't be included during this camping safari are lunch and dinner in Windhoek on Day 2, lunch in Luderitz on Day 6, dinner in Windhoek on Day 9 and lunch in Windhoek on Day 10.

Drinks

When in your safari camp, coffee, tea and hot chocolate are included and readily available, as well as tap water for drinking (we suggest you bring your own re-usable water bottle). Any other drinks are at your own expense and your guide will let you know when you can stop to stock up on alcohol and soft drinks during the safari. Bottled mineral water is sold almost

everywhere should you prefer not to drink the tap water; however rest assured tap water is perfectly safe to drink. There is a cool box or fridge on board the safari vehicle to keep each day's drinks cool.

Single travellers

No single supplement is charged on the Southern Namibia Desert Adventure.

Single travellers can usually be accommodated in a single tent/room on request, however you might be asked to share with a fellow traveller of the same sex should there be limited packing space in the safari vehicle or availability at the Windhoek guesthouse.

Age of travellers

This safari is available to travellers aged 12 and over. A private guided, tailor-made safari can be arranged on request for families with children aged younger than 12.

Laundry

This camping safari does not include a laundry service. Campsites will have running water to allow you to do your own hand washing and occasionally campsite staff are able to offer a laundry service at extra cost should you be staying two nights to allow time for this to be done. Feel free to speak to your guide for more details.

Luggage

To ensure enough luggage space in the safari vehicle, travellers are asked to come with one soft sided bag weighing a maximum of 15kg, plus a medium sized camera bag and day pack.

Visa & passport requirements

We are currently advised that British, Australian, New Zealand, Canadian and American travellers are not required to pre-arrange a visa for entry to South Africa or Namibia. Entry visas of up to 90 days are automatically granted on arrival so long as you can show proof of your departure flight if asked.

However, we stress that visa policies can change without prior notice and the **responsibility lies with you** to ensure you have up to date information on visa requirements before you begin your trip.

Please note that South Africa and Namibia immigration regulations stipulate that your passport must be valid for a **minimum of six months** after your departure date and you must have no less than **three clear pages** to accommodate immigration stamps or you may be refused entry.